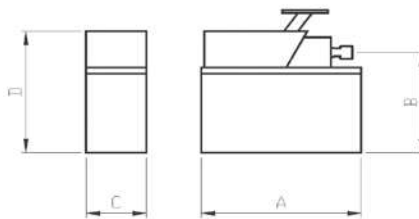


>> FOOT EFP-SERIES



-Can be used by oil pressure 700bar operating by air 7bar.  
 -Air oil pump is that can use conveniently by single acting or double acting ram.



>Specification

Model	Oil capacity (cc)	Operating Pressure (bar)		Put Flow (l/min)		Demensions (mm)				Weight (kg)
		Low	High	Low	High	A	B	C	D	
EFP-15	1500	20	700	2.2	0.9	265	125	130	110	7.3
EFP-20	2000	20	700	2.2	0.9	275	130	158	115	9.5
EFP-25	2500	20	700	2.2	0.9	275	120	167	110	12.5



>> 1/3HP MOTOR PUMP KUP-35-SERIES



>Motor Power: 1/3 HP  
 >Max Operating Pressure: 700bar  
 >Voltage: 220V 1ph 50/60Hz  
 >Reservoir Capacity: 0.8-1.6 liters

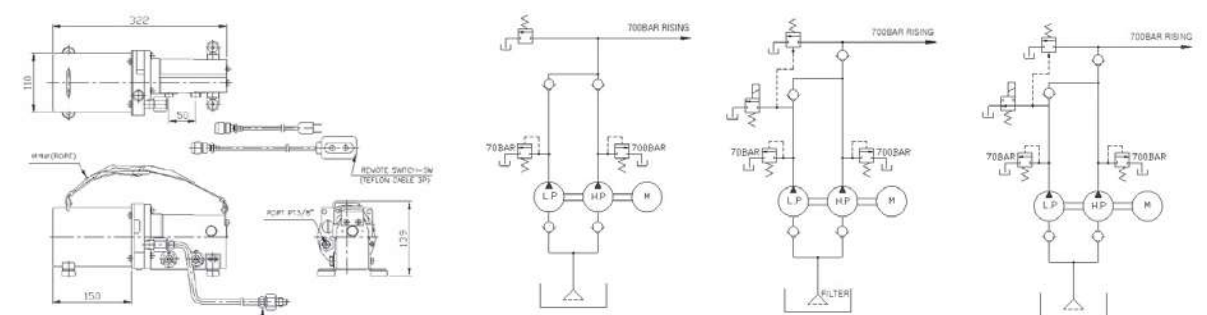
-Light weight, Compact design for easy portability.  
 -The most ideal product to prevent any injury which can be occurred by using hand pump.  
 -Enable to maximize the efficiency of work.  
 -Various models can be used with the most of hydraulic tools.  
 -Can be used anywhere and under any condition with oil-tight tank.  
 -Enable to be used for Hydraulic cylinder, Puncher, Puller, Bender, Cutter, and Hydraulic Press.  
 -220V Single phase is standard.  
 -Can be used for every electric tools.

>Specification

Model	Flow Rate (l/min)		Pressure Rating (bar)		Reservoir Capacity (liter)	Weight (kg)
	Low	High	Low	High		
KUP-35RH	2	0.2	10	700	0.8	7.5
					1.6(L)	8.5(L)

>Features and function of each model

Model	Function	Weight (kg)
KUP-35RH-NC(L)	Pressure hold type. Cylinder can be stopped on forward action. Cylinder cannot be stopped on retraction.	7.5
KUP-35RH-NO(L)	While on switch is pressed, pump is running. With optionally incorporated pressure switch, cylinder can be stopped at set pressure and cylinder returns automatically.	7.5
KUP-35RH-IN(L)	Cylinder can be stopped both on forward action and retraction.	7.5



-Drawings-

-KUP-35RH-NC(L)-

-KUP-35RH-NO(L)-

-KUP-35RH-IN(L)-