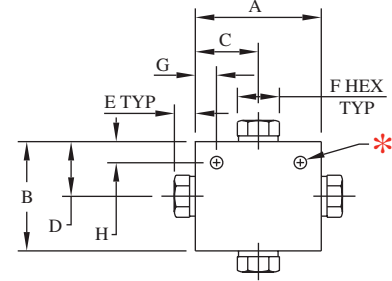
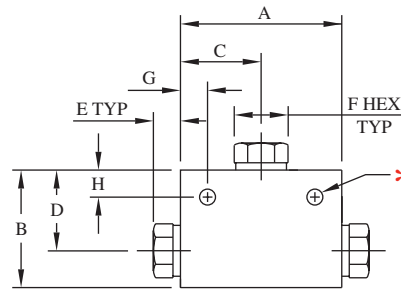
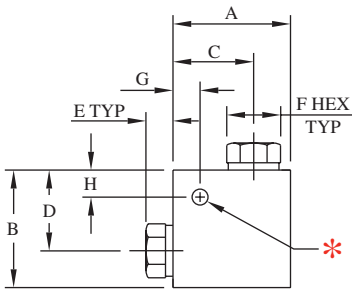


MEDIUM PRESSURE EQUIPMENT



ELBOWS

Catalog Number	Connection	Port	MAWP	A	B	C	D	E	F	Block Thickness	Mounting Holes*		
											G	H	Dia.
20L4	1/4" M/P Tube	0.125" (3.2)	20,000 PSI 1380 bar	1.50" (38.1)	1.13" (28.7)	0.75" (19.1)	0.75" (19.1)	0.35" (8.9)	0.50" (12.7)	0.62" (15.7)	0.25" (6.4)	0.25" (6.4)	0.22" (5.6)
20L6	3/8" M/P Tube	0.203" (5.2)	20,000 PSI 1380 bar	2.00" (50.8)	1.38" (35.1)	1.00" (25.4)	1.00" (25.4)	0.47" (11.9)	0.63" (16.0)	0.75" (19.1)	0.31" (7.9)	0.31" (7.9)	0.22" (5.6)
20L9	9/16" M/P Tube	0.359" (9.1)	20,000 PSI 1380 bar	2.50" (63.5)	1.75" (44.5)	1.25" (31.8)	1.25" (31.8)	0.66" (16.8)	0.88" (22.4)	1.00" (25.4)	0.50" (12.7)	0.50" (12.7)	0.28" (7.1)
20L12	3/4" M/P Tube	0.515" (13.1)	20,000 PSI 1380 bar	3.00" (76.2)	2.25" (57.2)	1.50" (38.1)	1.50" (38.1)	0.55" (14.0)	1.18" (30.0)	1.38" (35.1)	0.50" (12.7)	0.50" (12.7)	0.34" (8.7)
20L16	1" M/P Tube	0.562" (14.3)	20,000 PSI 1380 bar	4.12" (104.6)	3.00" (76.2)	2.06" (52.3)	2.06" (52.3)	0.69" (17.5)	1.38" (35.1)	1.75" (44.5)	0.69" (17.5)	0.69" (17.5)	0.41" (10.4)

TEES

Catalog Number	Connection	Port	MAWP	A	B	C	D	E	F	Block Thickness	Mounting Holes*		
											G	H	Dia.
20T4	1/4" M/P Tube	0.109" (2.8)	20,000 PSI 1380 bar	1.50" (38.1)	1.13" (28.7)	0.75" (19.1)	0.75" (19.1)	0.35" (8.9)	0.50" (12.7)	0.62" (15.7)	0.25" (6.4)	0.25" (6.4)	0.22" (5.6)
20T6	3/8" M/P Tube	0.203" (5.2)	20,000 PSI 1380 bar	2.00" (50.8)	1.38" (35.1)	1.00" (25.4)	1.00" (25.4)	0.47" (11.9)	0.63" (16.0)	0.75" (19.1)	0.31" (7.9)	0.31" (7.9)	0.22" (5.6)
20T9	9/16" M/P Tube	0.359" (9.1)	20,000 PSI 1380 bar	2.50" (63.5)	1.75" (44.5)	1.25" (31.8)	1.25" (31.8)	0.66" (16.8)	0.88" (22.4)	1.00" (25.4)	0.50" (12.7)	0.50" (12.7)	0.28" (7.1)
20T12	3/4" M/P Tube	0.515" (13.1)	20,000 PSI 1380 bar	3.00" (76.2)	2.25" (57.2)	1.50" (38.1)	1.50" (38.1)	0.55" (14.0)	1.18" (30.0)	1.38" (35.1)	0.50" (12.7)	0.50" (12.7)	0.34" (8.6)
20T16	1" M/P Tube	0.562" (14.3)	20,000 PSI 1380 bar	4.12" (104.6)	3.00" (76.2)	2.06" (52.3)	2.06" (52.3)	0.69" (17.5)	1.38" (35.1)	1.75" (44.5)	0.69" (17.5)	0.69" (17.5)	0.41" (10.4)

CROSSES

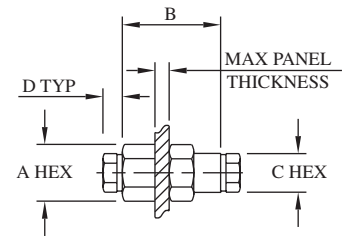
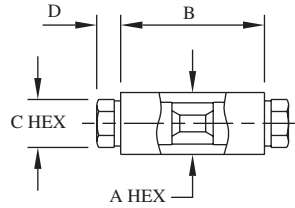
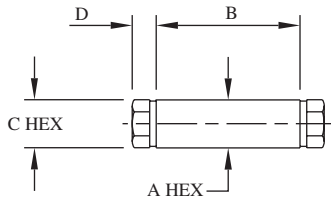
Catalog Number	Connection	Port	MAWP	A	B	C	D	E	F	Block Thickness	Mounting Holes*		
											G	H	Dia.
20X4	1/4" M/P Tube	0.125" (3.2)	20,000 PSI 1380 bar	1.50" (38.1)	1.50" (38.1)	0.75" (19.1)	0.75" (19.1)	0.35" (8.9)	0.50" (12.7)	0.62" (15.7)	0.25" (6.4)	0.25" (6.4)	0.22" (5.6)
20X6	3/8" M/P Tube	0.203" (5.2)	20,000 PSI 1380 bar	2.00" (50.8)	2.00" (50.8)	1.00" (25.4)	1.00" (25.4)	0.47" (11.9)	0.63" (16.0)	0.75" (19.1)	0.38" (9.7)	0.38" (9.7)	0.25" (6.4)
20X9	9/16" M/P Tube	0.359" (9.1)	20,000 PSI 1380 bar	2.50" (63.5)	2.50" (63.5)	1.25" (31.8)	1.25" (31.8)	0.66" (16.8)	0.88" (22.4)	1.00" (25.4)	0.50" (12.7)	0.50" (12.7)	0.28" (7.1)
20X12	3/4" M/P Tube	0.515" (13.1)	20,000 PSI 1380 bar	3.00" (76.2)	3.00" (76.2)	1.50" (38.1)	1.50" (38.1)	0.55" (14.0)	1.18" (30.0)	1.38" (35.1)	0.50" (12.7)	0.50" (12.7)	0.34" (8.7)
20X16	1" M/P Tube	0.687" (17.4)	20,000 PSI 1380 bar	4.12" (104.6)	4.12" (104.6)	2.06" (52.3)	2.06" (52.3)	0.69" (17.5)	1.38" (35.1)	1.75" (44.5)	0.69" (17.5)	0.69" (17.5)	0.41" (10.3)

*Mounting holes provided when the catalog number is suffixed by "-MH" when ordering.

All dimensions are for reference only and are subject to change.
Dimensions in parentheses are millimeters (mm)



MEDIUM PRESSURE EQUIPMENT



See bulkhead table below
for panel hole drill size

COUPLINGS

Catalog Number	Connection	Port	MAWP	A	B	C	D
20F4	1/4" M/P Tube	0.109" (2.8)	20,000 PSI 1380 bar	0.75" (19.1)	1.50" (38.1)	0.50" (12.7)	0.35" (8.9)
20F6	3/8" M/P Tube	0.203" (5.2)	20,000 PSI 1380 bar	0.75" (19.1)	1.75" (44.5)	0.63" (16.0)	0.47" (11.9)
20F9	9/16" M/P Tube	0.312" (7.9)	20,000 PSI 1380 bar	1.00" (25.4)	2.12" (53.8)	0.88" (22.4)	0.66" (16.8)
20F12	3/4" M/P Tube	0.438" (11.1)	20,000 PSI 1380 bar	1.38" (35.1)	2.50" (63.5)	1.18" (30.0)	0.55" (14.0)
20F16	1" M/P Tube	0.562" (14.3)	20,000 PSI 1380 bar	1.75" (44.5)	3.50" (88.9)	1.38" (35.1)	0.69" (17.5)

REPLACEABLE SEAT COUPLINGS

Catalog Number	Connection	Port	MAWP	A	B	C	D
20UF4	1/4" M/P Tube	0.109" (2.8)	20,000 PSI 1380 bar	0.75" (19.1)	1.50" (38.1)	0.50" (12.7)	0.35" (8.9)
20UF6	3/8" M/P Tube	0.203" (5.2)	20,000 PSI 1380 bar	0.75" (19.1)	1.75" (44.5)	0.63" (16.0)	0.47" (11.9)
20UF9	9/16" M/P Tube	0.312" (7.9)	20,000 PSI 1380 bar	1.00" (25.4)	2.00" (50.8)	0.88" (22.4)	0.66" (16.8)
20UF12	3/4" M/P Tube	0.438" (11.1)	20,000 PSI 1380 bar	1.38" (35.1)	2.50" (63.5)	1.18" (30.0)	0.55" (14.0)
20UF16	1" M/P Tube	0.562" (14.3)	20,000 PSI 1380 bar	1.75" (44.5)	3.50" (88.9)	1.38" (35.1)	0.69" (17.5)

BULKHEADS

Catalog Number	Connection	Port	MAWP	A	B	C	D	Panel Hole	Panel Thickness
20BF4	1/4" M/P Tube	0.109" (2.8)	20,000 PSI 1380 bar	1.00" (25.4)	2.00" (50.8)	0.50" (12.7)	0.35" (8.9)	0.88" (22.4)	0.38" (9.7)
20BF6	3/8" M/P Tube	0.203" (5.2)	20,000 PSI 1380 bar	1.00" (25.4)	2.00" (50.8)	0.63" (16.0)	0.47" (11.9)	0.94" (23.9)	0.38" (9.7)
20BF9	9/16" M/P Tube	0.312" (7.9)	20,000 PSI 1380 bar	1.38" (35.1)	2.62" (66.5)	0.88" (22.4)	0.66" (16.8)	1.25" (31.8)	0.50" (12.7)
20BF12	3/4" M/P Tube	0.438" (11.1)	20,000 PSI 1380 bar	1.88" (47.8)	2.62" (66.5)	1.18" (30.0)	0.55" (14.0)	1.69" (42.9)	0.38" (9.7)
20BF16	1" M/P Tube	0.562" (14.3)	20,000 PSI 1380 bar	2.12" (53.8)	3.50" (88.9)	1.38" (35.1)	0.69" (17.5)	2.00" (50.8)	0.50" (12.7)

All dimensions are for reference only and are subject to change.
Dimensions in parentheses are millimeters (mm)

