

>> ALUMINUM CYLINDER **ESRA-SERIES**



- >CAPACITY: 5-100 ton
- >STROKE: 50-250 mm
- >Max Pressure: 700 bar
- Single acting & Spring return
- Coupler port PT 3/8
- Mounting collar designed to hold full force.
- Smooth piston resist friction & corrosion
- Solid plunger with hardened saddle



Applicable Products

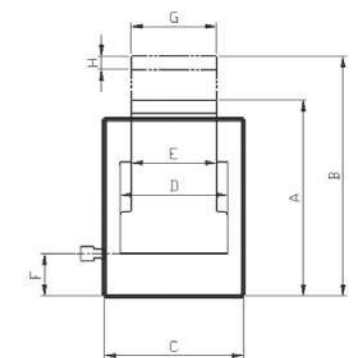


Model	Tonnage (ton)	Stroke (mm)	Oil capacity (cc)	Effective area (cm ²)	Collapsed Height A (mm)	Extended Height B (mm)	Outside Diameter C (mm)
ESRA-2050	20	50	156	31.2	128	178	96
ESRA-20100	20	100	312	31.2	178	278	96
ESRA-20150	20	150	468	31.2	228	378	96
ESRA-3050	30	50	221	44.2	137	187	108
ESRA-30100	30	100	442	44.2	187	287	108
ESRA-30150	30	150	663	44.2	237	387	108
ESRA-5050	50	50	354	70.8	147	197	136
ESRA-50100	50	100	708	70.8	197	297	136
ESRA-50150	50	150	1062	70.8	247	397	136
ESRA-50200	50	200	1416	70.8	297	497	136
ESRA-10050	100	50	716	143.1	185	235	195
ESRA-100100	100	100	1431	143.1	235	335	195
ESRA-100150	100	150	2147	143.1	285	435	195
ESRA-100200	100	200	2862	143.1	335	535	195
ESRA-150100	150	100	2138	213.8	245	345	247
ESRA-150150	150	150	3207	213.8	295	445	247

>> ALUMINUM CYLINDER **ESRA-SERIES**

ESRA SERIES with EPA-702S is perfect choice for you!

- Lightweight, easy to carry and positioning!**
- At half the weight of steel cylinders of comparable capacity!**
- Ultra light weight and compact design for easy portability!**



Cylinder Bore dia D (mm)	Load Diameter E (mm)	Bottom to Advance Port F (mm)	Saddle Diameter G (mm)	Saddle Height H (mm)	Weight (kg)	Model
65	58	20	48	12	3	ESRA-2050
65	58	20	48	12	4	ESRA-20100
65	58	20	48	12	5	ESRA-20150
75	67	22	53	12	3.8	ESRA-3050
75	67	22	53	12	5.2	ESRA-30100
75	67	22	53	12	6.6	ESRA-30150
95	85	25	70	14	6.8	ESRA-5050
95	85	25	70	14	9.1	ESRA-50100
95	85	25	70	14	11.4	ESRA-50150
95	85	25	70	14	14.7	ESRA-50200
135	110	33	85	20	16	ESRA-10050
135	110	33	85	20	19.5	ESRA-100100
135	110	33	85	20	23	ESRA-100150
135	110	33	85	20	26.5	ESRA-100200
165	140	50	110	25	35	ESRA-150100
165	140	50	110	25	39	ESRA-150150