

>> CENTER HOLE CYLINDER **ESCH(EDCH)-SERIES**

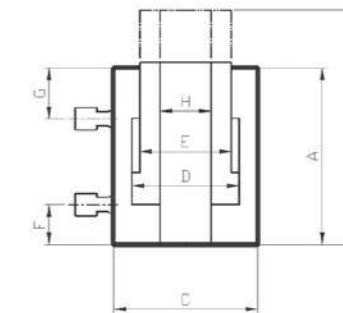


Model	Type	Tonnage (ton)	Stroke (mm)	Oil capacity (cc)	Effective area (cm ²)	Collapsed Height A (mm)	Extended Height B (mm)	Outside Diameter C (mm)
ESCH-1050	Single acting	10	50	88	176	130	180	75
ESCH-2015		20	15	49	32.8	130	145	105
ESCH-2050		20	50	164	32.8	165	215	105
ESCH-2075		20	75	246	32.8	190	265	105
ESCH-20150		20	150	492	32.8	265	415	105
ESCH-3060		30	60	286	47.7	180	240	115
ESCH-30150		30	150	716	47.7	270	420	115
ESCH-5075		50	75	530	70.7	238	313	159
ESCH-6075		60	75	671	89.5	238	313	169
ESCH-60150		60	150	1343	89.5	313	463	169
ESCH-10075		100	75	1155	154	268	343	218
EDCH-2075		Double acting	20	75	246	32.8	195	270
EDCH-3060	30		60	392	65.3	223	283	158
EDCH-30150	30		150	980	65.3	313	463	158
EDCH-30260	30		260	1698	65.3	423	683	158
EDCH-6090	60		90	990	110	329	419	165
EDCH-60130	60		130	1430	110	369	499	165
EDCH-60260	60		260	2860	110	499	759	165
EDCH-10040	100		40	582	145.5	286	326	227
EDCH-100150	100		150	2183	145.5	396	546	227
EDCH-100260	100		260	3783	145.5	506	766	227
EDCH-150200	150		200	4206	210.3	475	675	270

>> CENTER HOLE CYLINDER **ESCH(EDCH)-SERIES**



- >CAPACITY: 5 -100 ton
- >STROKE: 50 -250 mm
- >Max Pressure: 700 bar
- ESCH: Single acting & Spring return
- EDCH: Double acting & Hyd return
- Coupler port PT 3/8
- Aluminum tube is available (optional).
- Special size is available(optional).



Cylinder Bore diaD (mm)	Load DiameterE (mm)	Bottom to PortF (mm)	Top to PortG (mm)	Center hole Dia H (mm)	Weight (kg)	Model
55	38	26	-	20	3.4	ESCH-1050
75	55	33	-	27	3.2	ESCH-2015
75	55	33	-	27	5	ESCH-2050
75	55	33	-	27	7	ESCH-2075
75	55	33	-	27	18	ESCH-20150
90	63	21	-	37	12	ESCH-3060
90	63	21	-	37	16	ESCH-30150
115	85	30	-	54	28	ESCH-5075
125	85	30	-	54	38	ESCH-6075
125	85	30	-	54	75	ESCH-60150
175	140	45	-	80	59	ESCH-10075
75	55	33	50	27	11	EDCH-2075
105	80	50	60	37	32	EDCH-3060
105	80	50	60	37	42	EDCH-30150
105	80	50	60	37	55	EDCH-30260
135	95	55	75	54	38	EDCH-6090
135	95	55	75	54	42	EDCH-60130
135	95	55	75	54	54	EDCH-60260
175	150	65	86	80	77	EDCH-10040
175	150	65	86	80	107	EDCH-100150
175	150	65	86	80	138	EDCH-100260
200	160	75	90	85	162	EDCH-150200