

>> LOCK NUT CYLINDER ELNR-SERIES

- >CAPACITY: 50 -500 ton
- >STROKE: 50-300 mm
- >Max Pressure: 700 bar
- Safety lock nut for machanical load holding
- Single acting (Spring return is optional.)
- Coupler port PT 3/8
- Smooth piston resist friction & corrosion
- Tilting saddle is available(optional).



Applicable Products

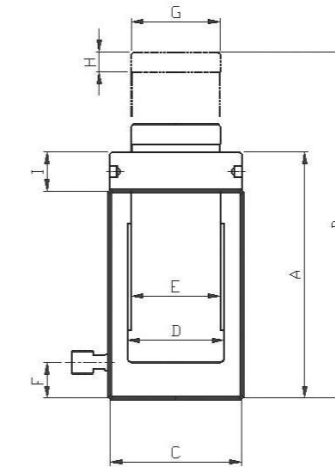


Model	Tonnage (ton)	Stroke (mm)	Oil capacity (cc)	Effective area (cm ²)	Collapsed Height A (mm)	Extended Height B (mm)	Outside Diameter C (mm)
ELNR-5050	50	50	121.5	24.3	215	265	128
ELNR-50150	50	150	365	24.3	315	465	128
ELNR-50300	50	300	729	24.3	465	765	128
ELNR-10050	100	50	716	143.1	262	312	185
ELNR-100150	100	150	2147	143.1	362	512	185
ELNR-100300	100	300	4293	143.1	512	812	185
ELNR-15050	150	50	1069	213.8	345	395	225
ELNR-150150	150	150	3207	213.8	445	595	225
ELNR-150300	150	300	6414	213.8	595	895	225
ELNR-30050	300	50	2169	433.7	535	585	317
ELNR-300150	300	150	6506	433.7	635	785	317
ELNR-300300	300	300	13011	433.7	785	1085	317
ELNR-50050	500	50	3653	730.6	565	615	408
ELNR-500150	500	150	10959	730.6	665	815	408
ELNR-500300	500	300	21918	730.6	815	1115	408

>> LOCK NUT CYLINDER ELNR-SERIES



- Safety lock nut is used for mechanical load holding.
- ELNR series is used for variety industries.
- Special size is available (optional).



Cylinder Bore dia D (mm)	Load Diameter E (mm)	Bottom to Advance Port F (mm)	Saddle Diameter G (mm)	Saddle Height H (mm)	Lock nut Thickness I (mm)	Weight (kg)	Model
95	85	32	85	25	50	24	ELNR-5050
95	85	32	85	25	50	32	ELNR-50150
95	85	32	85	25	50	43	ELNR-50300
135	120	37	120	25	55	56	ELNR-10050
135	120	37	120	25	55	74	ELNR-100150
135	120	37	120	25	55	101	ELNR-100300
165	140	50	140	35	60	97	ELNR-15050
165	140	50	140	35	60	124	ELNR-150150
165	140	50	140	35	60	164	ELNR-150300
235	175	110	175	40	140	298	ELNR-30050
235	175	110	175	40	140	345	ELNR-300150
235	175	110	175	40	140	415	ELNR-300300
305	230	95	230	45	150	531	ELNR-50050
305	230	95	230	45	150	609	ELNR-500150
305	230	95	230	45	150	726	ELNR-500300