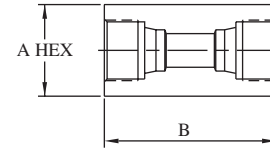


FEMALE-FEMALE COUPLINGS

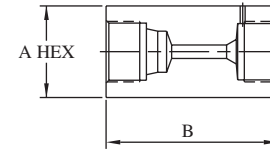
Low Pressure Female x Low Pressure Female

Catalog Number	Female L/P	Female L/P	A		B		Port	
LPC2L4L	1/8"	1/4"	0.75"	(19.1)	1.50"	(38.1)	0.093"	(2.4)
LPC2L6L	1/8"	3/8"	0.75"	(19.1)	1.75"	(44.5)	0.093"	(2.4)
LPC2L8L	1/8"	1/2"	1.00"	(25.4)	2.00"	(50.8)	0.093"	(2.4)
LPC4L6L	1/4"	3/8"	0.75"	(19.1)	1.75"	(44.5)	0.187"	(4.7)
LPC4L8L	1/4"	1/2"	1.00"	(25.4)	2.00"	(50.8)	0.187"	(4.7)
LPC6L8L	3/8"	1/2"	1.00"	(25.4)	2.00"	(50.8)	0.312"	(7.9)



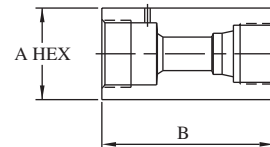
Low Pressure Female x High Pressure Female

Catalog Number	Female L/P	Female H/P	A		B		Port	
LPC2L4H	1/8"	1/4"	0.75"	(19.1)	1.50"	(38.1)	0.093"	(2.4)
LPC2L6H	1/8"	3/8"	1.00"	(25.4)	2.00"	(50.8)	0.093"	(2.4)
LPC2L9H	1/8"	9/16"	1.38"	(35.1)	2.25"	(57.2)	0.093"	(2.4)
LPC4L4H	1/4"	1/4"	0.75"	(19.1)	1.50"	(38.1)	0.093"	(2.4)
LPC4L6H	1/4"	3/8"	1.00"	(25.4)	1.75"	(44.5)	0.125"	(3.2)
LPC4L9H	1/4"	9/16"	1.38"	(35.1)	2.25"	(57.2)	0.187"	(4.7)
LPC6L4H	3/8"	1/4"	0.75"	(19.1)	1.50"	(38.1)	0.093"	(2.4)
LPC6L6H	3/8"	3/8"	1.00"	(25.4)	1.75"	(44.5)	0.125"	(3.2)
LPC6L9H	3/8"	9/16"	1.38"	(35.1)	2.25"	(57.2)	0.187"	(4.7)
LPC8L4H	1/2"	1/4"	1.00"	(25.4)	1.62"	(41.1)	0.093"	(2.4)
LPC8L6H	1/2"	3/8"	1.38"	(35.1)	2.00"	(50.8)	0.125"	(3.2)
LPC8L9H	1/2"	9/16"	1.38"	(35.1)	2.25"	(57.2)	0.187"	(4.7)



Low Pressure Female x Medium Pressure Female

Catalog Number	Female L/P	Female M/P	A		B		Port	
LPC2L4M	1/8"	1/4"	0.75"	(19.1)	1.50"	(38.1)	0.093"	(2.4)
LPC2L6M	1/8"	3/8"	1.00"	(25.4)	1.50"	(38.1)	0.093"	(2.4)
LPC2L9M	1/8"	9/16"	1.00"	(25.4)	2.00"	(50.8)	0.093"	(2.4)
LPC4L4M	1/4"	1/4"	0.75"	(19.1)	1.50"	(38.1)	0.103"	(2.6)
LPC4L6M	1/4"	3/8"	0.75"	(19.1)	1.75"	(44.5)	0.203"	(5.2)
LPC4L9M	1/4"	9/16"	1.00"	(25.4)	2.00"	(50.8)	0.187"	(4.7)
LPC6L4M	3/8"	1/4"	0.75"	(19.1)	1.50"	(38.1)	0.103"	(2.6)
LPC6L6M	3/8"	3/8"	0.75"	(19.1)	1.75"	(44.5)	0.203"	(5.2)
LPC6L9M	3/8"	9/16"	1.00"	(25.4)	2.00"	(50.8)	0.312"	(7.9)
LPC6L12M	3/8"	3/4"	1.38"	(35.1)	2.50"	(63.5)	0.312"	(7.9)
LPC8L4M	1/2"	1/4"	0.75"	(19.1)	2.00"	(50.8)	0.103"	(2.6)
LPC8L6M	1/2"	3/8"	1.00"	(25.4)	2.00"	(50.8)	0.203"	(5.2)
LPC8L9M	1/2"	9/16"	1.00"	(25.4)	2.00"	(50.8)	0.359"	(9.1)
LPC8L12M	1/2"	3/4"	1.38"	(35.1)	2.50"	(63.5)	0.437"	(11.1)



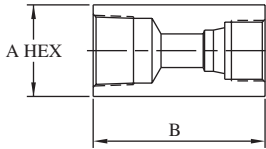
NOTE: See page ACC-1 to determine maximum allowable working pressure (MAWP)



All dimensions are for reference only and are subject to change.
Dimensions in parentheses are millimeters (mm).

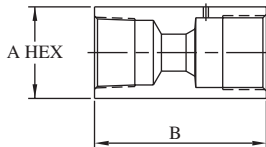
FEMALE-FEMALE COUPLINGS

Low Pressure Female x NPT Female



Catalog Number	Female L/P	Female NPT	A		B		Port	
LPC2L2P	1/8"	1/8"	0.50"	(12.7)	1.50"	(38.1)	0.093"	(2.4)
LPC2L4P	1/8"	1/4"	0.75"	(19.1)	1.50"	(38.1)	0.093"	(2.4)
LPC2L6P	1/8"	3/8"	1.00"	(25.4)	1.56"	(39.6)	0.093"	(2.4)
LPC2L8P	1/8"	1/2"	1.38"	(35.1)	2.00"	(50.8)	0.093"	(2.4)
LPC4L2P	1/4"	1/8"	0.75"	(19.1)	1.75"	(44.5)	0.187"	(4.7)
LPC4L4P	1/4"	1/4"	0.75"	(19.1)	1.50"	(38.1)	0.187"	(4.7)
LPC4L6P	1/4"	3/8"	1.00"	(25.4)	2.12"	(53.8)	0.187"	(4.7)
LPC4L8P	1/4"	1/2"	1.38"	(35.1)	2.00"	(50.8)	0.187"	(4.7)
LPC6L2P	3/8"	1/8"	0.75"	(19.1)	1.62"	(41.1)	0.187"	(4.7)
LPC6L4P	3/8"	1/4"	0.75"	(19.1)	1.62"	(41.1)	0.312"	(7.9)
LPC6L6P	3/8"	3/8"	1.00"	(25.4)	1.75"	(44.5)	0.312"	(7.9)
LPC6L8P	3/8"	1/2"	1.38"	(35.1)	2.25"	(57.2)	0.312"	(7.9)
LPC8L2P	1/2"	1/8"	1.00"	(25.4)	2.00"	(50.8)	0.339"	(8.6)
LPC8L4P	1/2"	1/4"	1.00"	(25.4)	2.00"	(50.8)	0.437"	(11.1)
LPC8L6P	1/2"	3/8"	1.00"	(25.4)	2.00"	(50.8)	0.437"	(11.1)
LPC8L8P	1/2"	1/2"	1.00"	(25.4)	2.00"	(50.8)	0.437"	(11.1)
LPC8L12P	1/2"	3/4"	1.75"	(44.5)	2.50"	(63.5)	0.437"	(11.1)

Medium Pressure Female x NPT Female



Catalog Number	Female M/P	Female NPT	A		B		Port	
10F4M2P	1/4"	1/8"	0.75"	(19.1)	1.50"	(38.1)	0.109"	(2.8)
10F4M4P	1/4"	1/4"	0.75"	(19.1)	1.50"	(38.1)	0.125"	(3.2)
10F4M6P	1/4"	3/8"	1.00"	(25.4)	1.62"	(41.1)	0.125"	(3.2)
10F4M8P	1/4"	1/2"	1.38"	(35.1)	2.12"	(53.8)	0.125"	(3.2)
10F6M2P	3/8"	1/8"	0.75"	(19.1)	1.75"	(44.5)	0.203"	(5.2)
10F6M4P	3/8"	1/4"	0.75"	(19.1)	1.75"	(44.5)	0.203"	(5.2)
10F6M6P	3/8"	3/8"	1.00"	(25.4)	1.68"	(42.7)	0.203"	(5.2)
10F6M8P	3/8"	1/2"	1.38"	(35.1)	2.12"	(53.8)	0.203"	(5.2)
10F9M2P	9/16"	1/8"	1.00"	(25.4)	2.00"	(50.8)	0.339"	(8.6)
10F9M4P	9/16"	1/4"	1.00"	(25.4)	2.00"	(50.8)	0.359"	(9.1)
10F9M6P	9/16"	3/8"	1.00"	(25.4)	2.00"	(50.8)	0.359"	(9.1)
10F9M8P	9/16"	1/2"	1.38"	(35.1)	2.25"	(57.2)	0.359"	(9.1)
10F9M12P	9/16"	3/4"	1.75"	(44.5)	2.50"	(63.5)	0.359"	(9.1)
10F9M16P	9/16"	1"	1.88"	(47.8)	2.44"	(62.0)	0.359"	(9.1)
10F12M2P	3/4"	1/8"	1.38"	(35.1)	2.50"	(63.5)	0.339"	(8.6)
10F12M4P	3/4"	1/4"	1.38"	(35.1)	2.50"	(63.5)	0.437"	(11.1)
10F12M6P	3/4"	3/8"	1.38"	(35.1)	2.50"	(63.5)	0.516"	(13.1)
10F12M8P	3/4"	1/2"	1.38"	(35.1)	2.50"	(63.5)	0.516"	(13.1)
10F12M12P	3/4"	3/4"	1.75"	(44.5)	2.50"	(63.5)	0.516"	(13.1)
10F12M16P	3/4"	1"	2.13"	(54.1)	2.75"	(69.9)	0.516"	(13.1)
10F16M2P	1"	1/8"	1.75"	(44.5)	3.00"	(76.2)	0.339"	(8.6)
10F16M4P	1"	1/4"	1.75"	(44.5)	3.00"	(76.2)	0.437"	(11.1)
10F16M6P	1"	3/8"	1.75"	(44.5)	3.00"	(76.2)	0.578"	(14.7)
10F16M8P	1"	1/2"	1.75"	(44.5)	3.00"	(76.2)	0.687"	(17.4)
10F16M12P	1"	3/4"	1.75"	(44.5)	3.00"	(76.2)	0.687"	(17.4)
10F16M16P	1"	1"	2.13"	(54.1)	3.50"	(88.9)	0.687"	(17.4)

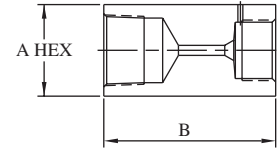
NOTE: See page ACC-1 to determine maximum allowable working pressure (MAWP)

All dimensions are for reference only and are subject to change.
Dimensions in parentheses are millimeters (mm).

FEMALE-FEMALE COUPLINGS

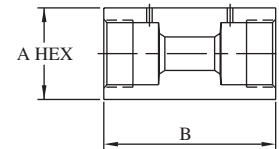
High Pressure Female x NPT Female

Catalog Number	Female H/P	Female NPT	A		B		Port	
10F4H2P	1/4"	1/8"	0.75"	(19.1)	1.50"	(38.1)	0.093"	(2.4)
10F4H4P	1/4"	1/4"	0.75"	(19.1)	1.50"	(38.1)	0.093"	(2.4)
10F4H6P	1/4"	3/8"	1.00"	(25.4)	1.62"	(41.1)	0.093"	(2.4)
10F4H8P	1/4"	1/2"	1.38"	(35.1)	2.12"	(53.8)	0.093"	(2.4)
10F6H2P	3/8"	1/8"	1.00"	(25.4)	1.75"	(44.5)	0.125"	(3.2)
10F6H4P	3/8"	1/4"	1.00"	(25.4)	1.75"	(44.5)	0.125"	(3.2)
10F6H6P	3/8"	3/8"	1.00"	(25.4)	1.75"	(44.5)	0.125"	(3.2)
10F6H8P	3/8"	1/2"	1.38"	(35.1)	2.12"	(53.8)	0.125"	(3.2)
10F9H2P	9/16"	1/8"	1.38"	(35.1)	2.25"	(57.2)	0.187"	(4.7)
10F9H4P	9/16"	1/4"	1.38"	(35.1)	2.25"	(57.2)	0.187"	(4.7)
10F9H6P	9/16"	3/8"	1.38"	(35.1)	2.25"	(57.2)	0.187"	(4.7)
10F9H8P	9/16"	1/2"	1.38"	(35.1)	2.25"	(57.2)	0.187"	(4.7)
10F9H12P	9/16"	3/4"	1.38"	(35.1)	2.50"	(63.5)	0.187"	(4.7)



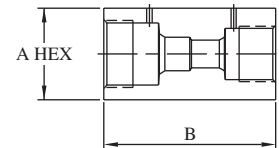
Medium Pressure Female x Medium Pressure Female

Catalog Number	Female M/P	Female M/P	A		B		Port	
20F4M6M	1/4"	3/8"	0.75"	(19.1)	1.75"	(44.5)	0.109"	(2.8)
20F4M9M	1/4"	9/16"	1.00"	(25.4)	2.00"	(50.8)	0.109"	(2.8)
20F4M12M	1/4"	3/4"	1.38"	(35.1)	2.50"	(63.5)	0.109"	(2.8)
20F4M16M	1/4"	1"	1.75"	(44.5)	3.00"	(76.2)	0.109"	(2.8)
20F6M9M	3/8"	9/16"	1.00"	(25.4)	2.00"	(50.8)	0.203"	(5.2)
20F6M12M	3/8"	3/4"	1.38"	(35.1)	2.50"	(63.5)	0.203"	(5.2)
20F6M16M	3/8"	1"	1.75"	(44.5)	3.00"	(76.2)	0.203"	(5.2)
20F9M12M	9/16"	3/4"	1.38"	(35.1)	2.50"	(63.5)	0.312"	(7.9)
20F9M16M	9/16"	1"	1.75"	(44.5)	3.00"	(76.2)	0.359"	(9.1)
20F12M16M	3/4"	1"	1.75"	(44.5)	3.00"	(76.2)	0.516"	(13.1)



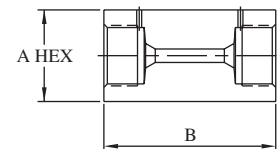
Medium Pressure Female x High Pressure Female

Catalog Number	Female M/P	Female H/P	A		B		Port	
20F4M4H	1/4"	1/4"	0.75"	(19.1)	1.50"	(38.1)	0.093"	(2.4)
20F4M6H	1/4"	3/8"	1.00"	(25.4)	1.75"	(44.5)	0.109"	(2.8)
20F4M9H	1/4"	9/16"	1.38"	(35.1)	2.25"	(57.2)	0.109"	(2.8)
20F6M4H	3/8"	1/4"	0.75"	(19.1)	1.75"	(44.5)	0.093"	(2.4)
20F6M6H	3/8"	3/8"	1.00"	(25.4)	1.75"	(44.5)	0.125"	(3.2)
20F6M9H	3/8"	9/16"	1.38"	(35.1)	2.25"	(57.2)	0.187"	(4.7)
20F9M4H	9/16"	1/4"	1.00"	(25.4)	2.00"	(50.8)	0.093"	(2.4)
20F9M6H	9/16"	3/8"	1.00"	(25.4)	2.00"	(50.8)	0.125"	(3.2)
20F9M9H	9/16"	9/16"	1.38"	(35.1)	2.25"	(57.2)	0.187"	(4.7)
20F12M4H	3/4"	1/4"	1.38"	(35.1)	2.50"	(63.5)	0.093"	(2.4)
20F12M6H	3/4"	3/8"	1.38"	(35.1)	2.50"	(63.5)	0.125"	(3.2)
20F12M9H	3/4"	9/16"	1.38"	(35.1)	2.50"	(63.5)	0.187"	(4.7)
20F16M4H	1"	1/4"	1.75"	(44.5)	3.00"	(76.2)	0.093"	(2.4)
20F16M6H	1"	3/8"	1.75"	(44.5)	3.00"	(76.2)	0.125"	(3.2)
20F16M9H	1"	9/16"	1.75"	(44.5)	3.00"	(76.2)	0.187"	(4.7)



High Pressure Female x High Pressure Female

Catalog Number	Female H/P	Female H/P	A		B		Port	
60F4H6H	1/4"	3/8"	1.00"	(25.4)	1.75"	(44.5)	0.093"	(2.4)
60F4H9H	1/4"	9/16"	1.38"	(35.1)	2.25"	(57.2)	0.093"	(2.4)
60F6H9H	3/8"	9/16"	1.38"	(35.1)	2.25"	(57.2)	0.125"	(3.2)



NOTE: See page ACC-1 to determine maximum allowable working pressure (MAWP)



All dimensions are for reference only and are subject to change.
Dimensions in parentheses are millimeters (mm).